

# Making the world a better place for our children

Lindsay Newton  
The Children's Champion in Dudley

Department for children, schools and families

Building Better Children's Futures  
A new way of working with schools and families

**Cem**  
The Children's Education Manifesto

GEM Conference 2008  
Tuesday 2 September - Friday 5 September  
Widnes, Kent

## Heritage Learning & Social Change

### The Children's Plan Building brighter futures

Department for children, schools and families

Department for children, schools and families

**The Children's Plan  
Building brighter futures**

Department for children, schools and families

*'Long term vision to improve schools and create a step-change in the way parents and families are supported to deal with the new challenges faced by young people in the 21st century.'*

Department for children, schools and families

Learning Outside The Classroom  
Manifesto 2007

Every young person should experience the world beyond the classroom as an essential part of learning and personal development, whatever their age, ability or circumstances. These, often the most memorable learning experiences, help us to make sense of the world around us by making links between feelings and learning.

Department for children, schools and families

Learning Outside The Classroom  
Manifesto 2007

These experiences can take place in the school grounds; local nature reserves and wild places; city farms and parks; streetscapes; field study centres; farms and the countryside; remote wild and adventurous places; heritage and cultural sites; zoos and botanic gardens; places of worship; museums, theatres, galleries and music venues; and on cultural, language and fieldwork visits abroad.


Department for children, schools and families

Learning Outside The Classroom  
Manifesto 2007


The Manifesto can involve everyone who sees the benefits to young people, such as Government, Head teachers, governors, teachers and support staff, parents, local authorities, community and voluntary organisations, curriculum subject bodies, businesses and all those agencies that provide external support to schools.

Department for children, schools and families

Dudley Children's Trust play pathfinder 2008 - 2011



Learning Outside the Classroom (LOTC)



**Fair Play**

A consultation on the play strategy

A commitment from the Children's Plan

Department for Children, Schools and Families

Department for Children, Schools and Families

**To provide opportunities for informal learning through play**

Dudley Children's Trust play pathfinder 2008 - 2011



**Fair Play**

A consultation on the play strategy

A commitment from the Children's Plan

Department for Children, Schools and Families

Department for Children, Schools and Families

The ability to play safely and independently is one of the defining characteristics of a good childhood. Play is first and foremost to help children have fun but it can also keep them happy and healthy and allow them to develop and achieve their full potential.

Dudley Children's Trust play pathfinder 2008 - 2011



**Fair Play**

A consultation on the play strategy

A commitment from the Children's Plan

Department for Children, Schools and Families



The ability to play safely and independently is one of the defining characteristics of a good childhood. Play is first and foremost to help children have fun but it can also keep them happy and healthy and allow them to develop and achieve their full potential.

**JUST enjoy**



**JUST enjoy**

get involved at [www.justenjoy.tv](http://www.justenjoy.tv)


The DCSF Play Pathfinder will transform the play opportunities for a large number of children and young people across Dudley. The project will focus particularly upon those children between the ages of 8 to 13 years of age, those children who are missing out at the moment, especially girls, and those children with profound and multiple physical disabilities or learning difficulties.

**JUST enjoy**

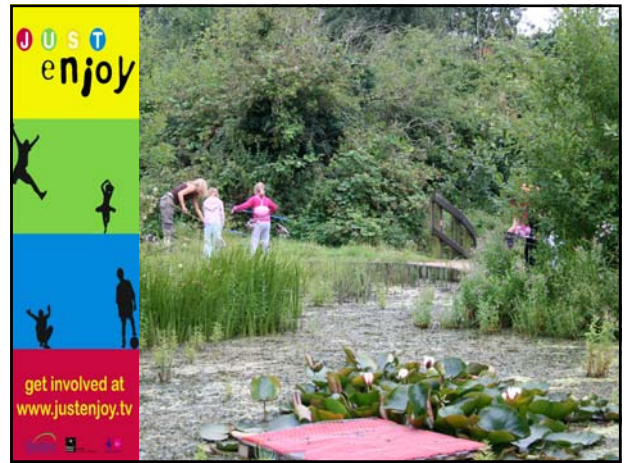
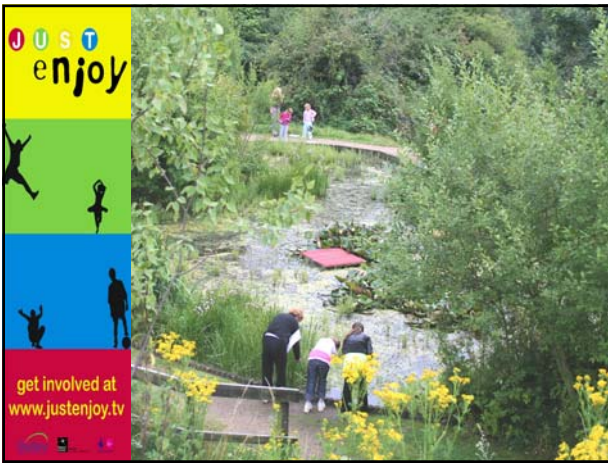
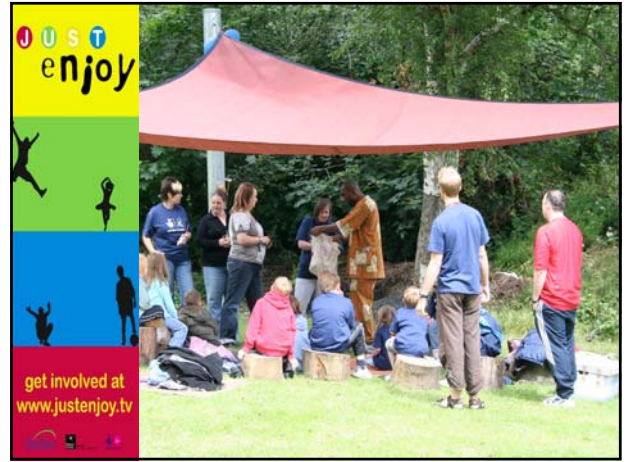


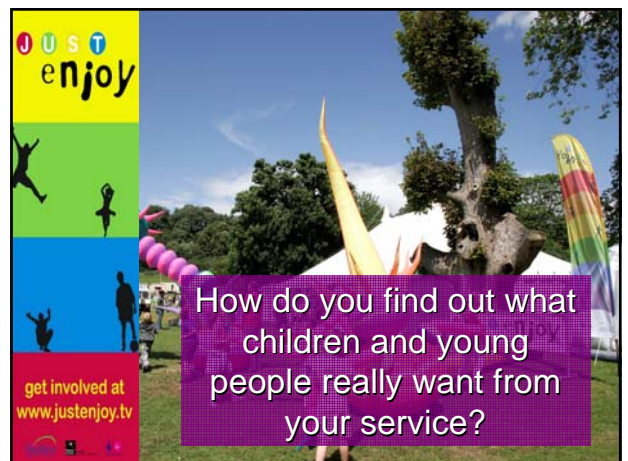
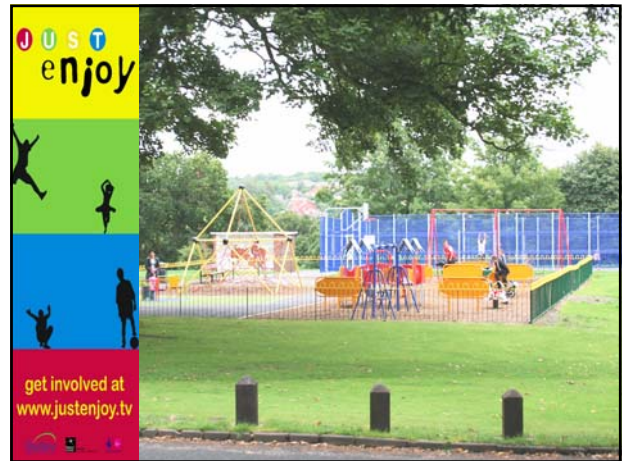
get involved at [www.justenjoy.tv](http://www.justenjoy.tv)

**JUST enjoy**



get involved at [www.justenjoy.tv](http://www.justenjoy.tv)











Dudley Children's Trust play pathfinder 2008 - 2011



Fair Play  
A commitment to the play challenge  
A commitment to The Children's Plan  
Supported by Dudley Children's Services



Dudley Children's Services  
play pathfinder  
application  
2008 - 2011  
Designed for children, schools and families

[www.justenjoy.tv](http://www.justenjoy.tv)

Approved for children, schools and families