



heritage  
lottery fund



Awarding funds from

**The National Lottery®**

# Funding volunteers in learning projects

GEM Volunteering for Learning Conference,  
British Museum, 30<sup>th</sup> October 2008

*Melissa Strauss & Stuart McLeod*  
Heritage Lottery Fund



## Workshop programme

1. HLF's aims and funding programmes
2. Volunteering – meeting HLF's 'participation' aim
3. Case studies – volunteers in learning projects
4. Q&A

# Heritage Lottery Fund – our aims and funding programmes



- Dedicated funder to heritage
- £180 million a year to invest
- Grants from £3,000 - £5 million



## Heritage Lottery Fund – our aims

### Our strategic aims are to:

- Conserve the UK's diverse heritage for present and future generations to experience and enjoy  
**(Conservation)**
- Help more people, and a wider range of people, to take an active part in and make decisions about their heritage  
**(Participation)**
- Help people to learn about their own and other people's heritage  
**(Learning)**



# Learning

Opportunities to learn about the heritage could include:

- providing information through displays, leaflets or a website;
- encouraging people to be trained in new skills; and
- holding open days, tours or practical sessions.





## Conservation

Opportunities to preserve and protect the heritage could include:

- surveys and research to help people understand the heritage better;
- repairing a building or monument;
- carrying out conservation work to a heritage item, archive or collection; and
- providing training in conservation skills as part of the project.

# Participation

Opportunities for people to take part in your project could include:

- developing a volunteer programme;
- holding activities for specific audiences that are not currently involved with your heritage; and
- setting up a new group to allow a wider range of people to make decisions about your heritage (for example, a community advisory group or a youth forum)



# Heritage Lottery Fund – funding programmes

## General programmes

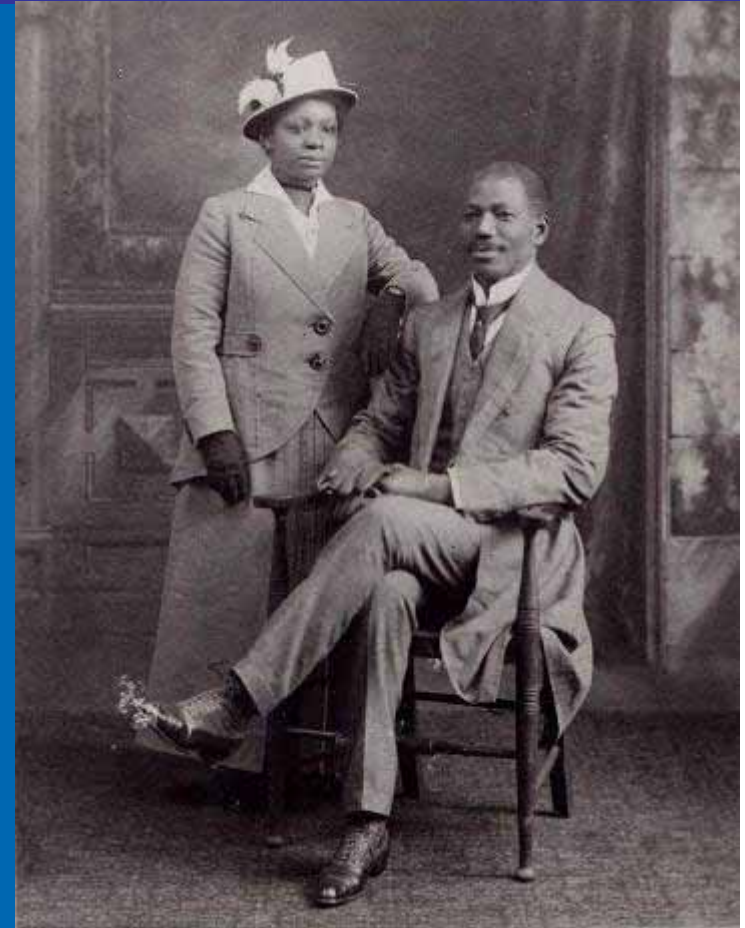
- Grants over £5 million
- Grants £1 million - £5 million
- Grants £50,000 - £1 million
- Grants up to £50,000



# Heritage Lottery Fund – funding programmes

## Targeted programmes

- Young Roots
- Parks for People
- Townscape Heritage Initiative
- Landscape Partnerships
- Repair Grants for Places of Worship



# Development support

- Read guidance notes, case studies, ‘Thinking About...’
- Think about need and demand
- Submit a pre-application form online
- Get a written response within 10 working days
- Grant surgery
- Develop idea
- Apply

Version 11 Your Heritage: Pre-Application Enquiry Form



**Your Heritage: Pre-Application Enquiry Form**

**Notes**  
**Your Heritage: Pre-application Enquiry Form**

Please use this short form to ask for advice from us before you fill in an application form. It is designed to help us to tell you quickly whether we could consider funding your project and to offer you guidance at an early stage in the development of your project.

Fill in the form as fully as you can but do not worry if you do not have enough information at this stage to answer all the questions.

On receipt of this form we aim to contact you within 10 working days.

We fill in this section:  
Date we received your form:  
Reference no.:

**Section one - Your organisation**  
**Project Title**

Title of the project  
*African music workshops*

**Your Organisation**

Name of your organisation      *African Culture Arts and Sport Network*

Address of your organisation:  
*4 Mitchell Close*

Address line 1  
Address line 2  
Address line 3

Town / city      *Rainham*  
County      *Essex*  
Postcode      *RM13 9QY*

**Main contact**

Name      *Jean-marie Mario Lutete*

Position of the main contact person

Page: 1

## Volunteering – meeting HLF’s ‘participation’ aim

Help more people, and a wider range of people, to take an active part in and make decisions about heritage

There are 3 ways you can meet this aim:

- **Create opportunities for people to volunteer in your project**
- Help your community to take an active part in your project, including helping people make decisions about heritage
- Develop new and/or wider audiences for your heritage

80% of projects awarded in the last year have included opportunities for volunteers



## Volunteering – meeting HLF’s ‘participation’ aim

We welcome projects that:

- Increase the number, range and quality of opportunities for heritage volunteering
- Recruit new volunteers
- Encourage a greater diversity of volunteers with opportunities for people of all ages, abilities and backgrounds
- Involve young people as volunteers
- Provide tailored training and support for volunteers

## Volunteering – your application



At the first round you will need to tell us:

- What volunteers will do in your project
- What benefits they will bring to heritage
- What benefits the project will bring to them

In the second round your activity plan must include the full details of all aspects of volunteering in your project

You also need to consider all of the costs involved

## Volunteering – examples of what we will fund

- Out of pocket expenses
- Childcare costs
- Training and related resources
- Essential equipment
- A new staff post
- Refurbishment of a space to accommodate volunteers
- Reasonable adjustments for disabled volunteers

Volunteer time can also be claimed as a non-cash contribution to your project



## Volunteering – what we look for



- Volunteer policy
- Project planning
- Expertise and management
- Meeting volunteers' needs
- Recruitment
- Spaces
- Rewarding and retaining volunteers
- Evaluation
- Lasting benefits

## Project example – England's Past for Everyone

### Learning for volunteers

### Volunteers supporting learning programmes

- 5 year programme 2005-2010 based at the University of London
- 10 Counties each delivering a local history publication, volunteer programme and schools project
- To date over 250 volunteers
- Schools programme links local history to curriculum and has engaged over 300 pupils



## Project example – England's Past for Everyone

Learning and training for volunteers:

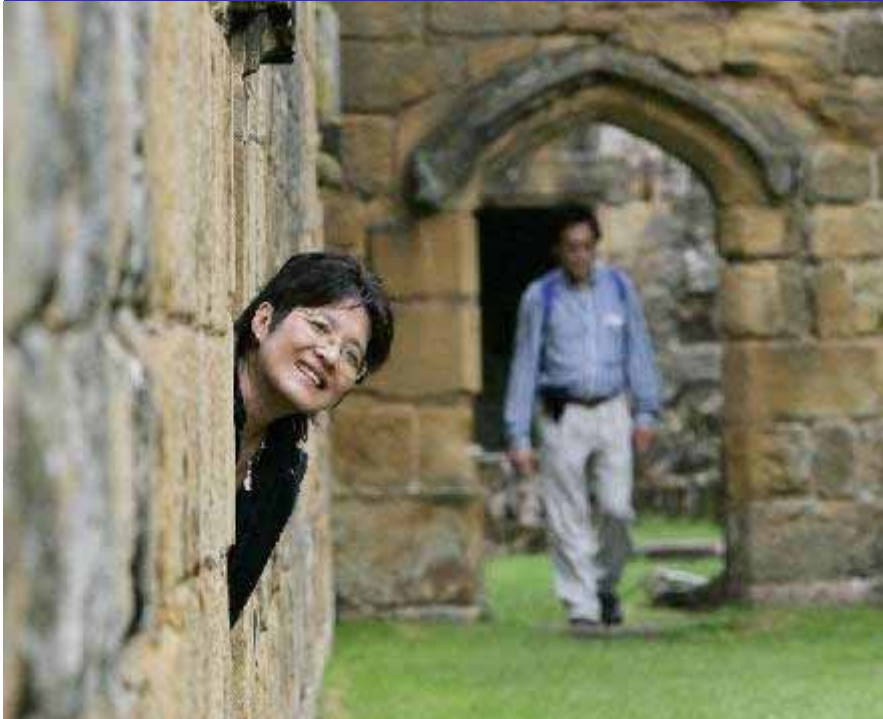
- Volunteers trained in specific tasks, such as palaeography, photography, oral history
- Piloting models of 'apprenticeship' teaming up new and experienced volunteers
- Providing a volunteer toolkit

Volunteers supporting learning services and programmes:

- Oral history interviews and show and tell in schools in Wiltshire about how farming has changed over the past 200 years
- Researching the history of street names in Ledbury to help pupils understand the history of their walk to school from Tudor times
- Resourcing maps to enable schools to represent the development of the area and imagine the area in 50 years



## Project example – Mosaic Partnership (Heritage Grants)



- Project cost - £950,000
- Grant award - £660,000
- Led by the Campaign for National Parks in partnership with four National Park Authorities and the YHA.
- Aim – open up opportunities for ethnic minority communities to enjoy National Parks by developing long term and direct engagement between these communities and the National Parks.

## Mosaic Partnership – meeting HLF’s ‘participation’ aim

How did the project “Help more people, and a wider range of people, to take an active part in and make decisions about their heritage”?

- Recruitment of a team of ‘Community Champions’ who were supported through a programme of learning and enabling.
- Champions identified within the major conurbations no more than two hours journey from the National Park.



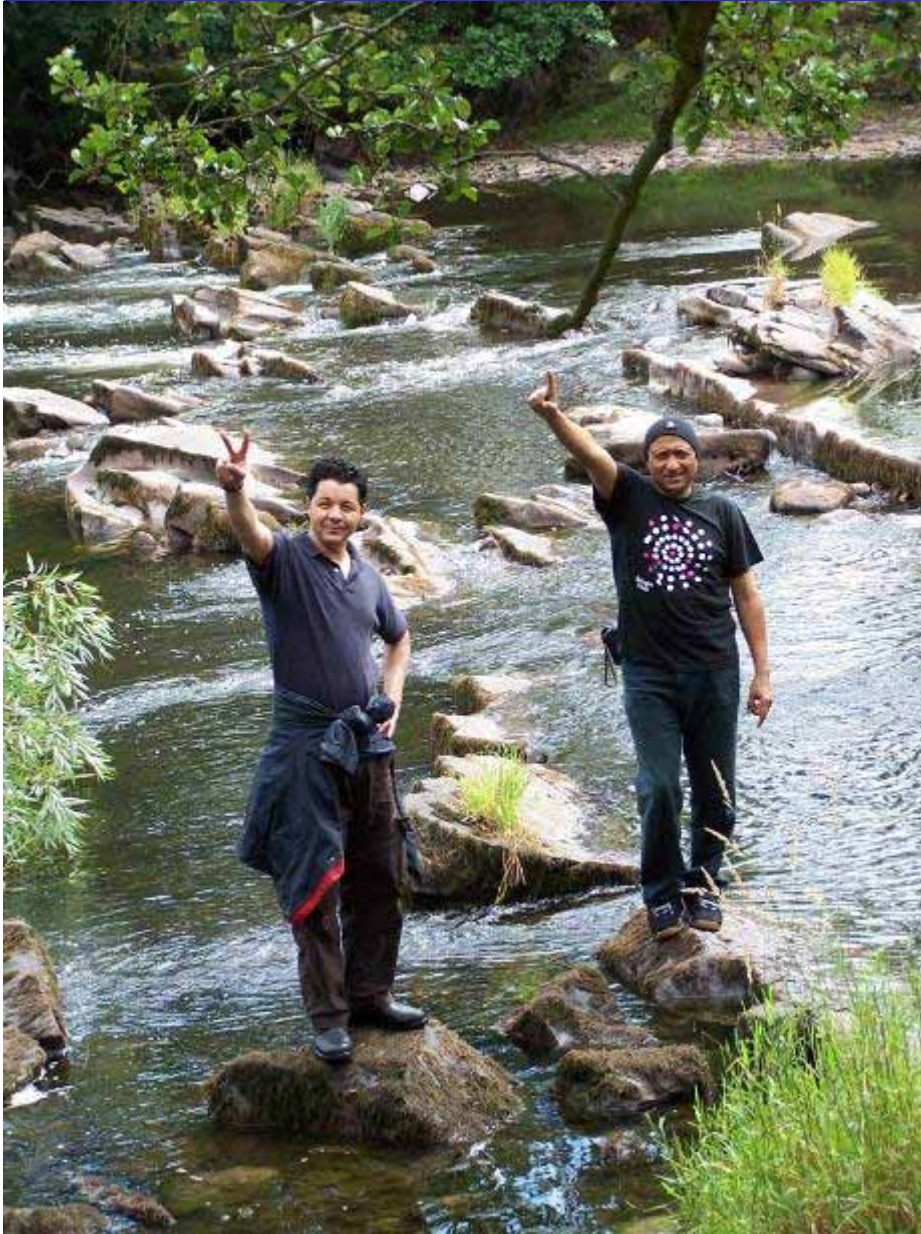
## Mosaic Partnership – meeting HLF’s ‘participation’ aim



### Volunteer activities, roles and responsibilities

- ‘Group Leader Visit’ – National Park induction
- Positions on the project Management Team and Strategy Group
- Practical conservation
- Producing new publicity materials

## Mosaic Partnership – meeting HLF’s ‘participation’ aim



### Volunteer activities, roles and responsibilities

- Training (trip planning, fundraising, hill walking/navigation)
- Organising and leading visits for their own communities
- Mentoring by- / work shadowing of- Park officers
- Governance positions

# Outcomes for National Parks organisations



- A better understanding of the needs and aspirations of BME communities
- Improved service provision
- More BME community participation in National Park management and activities

Heritage Lottery Fund  
7 Holbein Place  
London SW1W 8NR

Telephone: 020 7591 6000  
Textphone: 020 7591 6255

[www.hlf.org.uk](http://www.hlf.org.uk)

